



I-85 N Greenville, SC

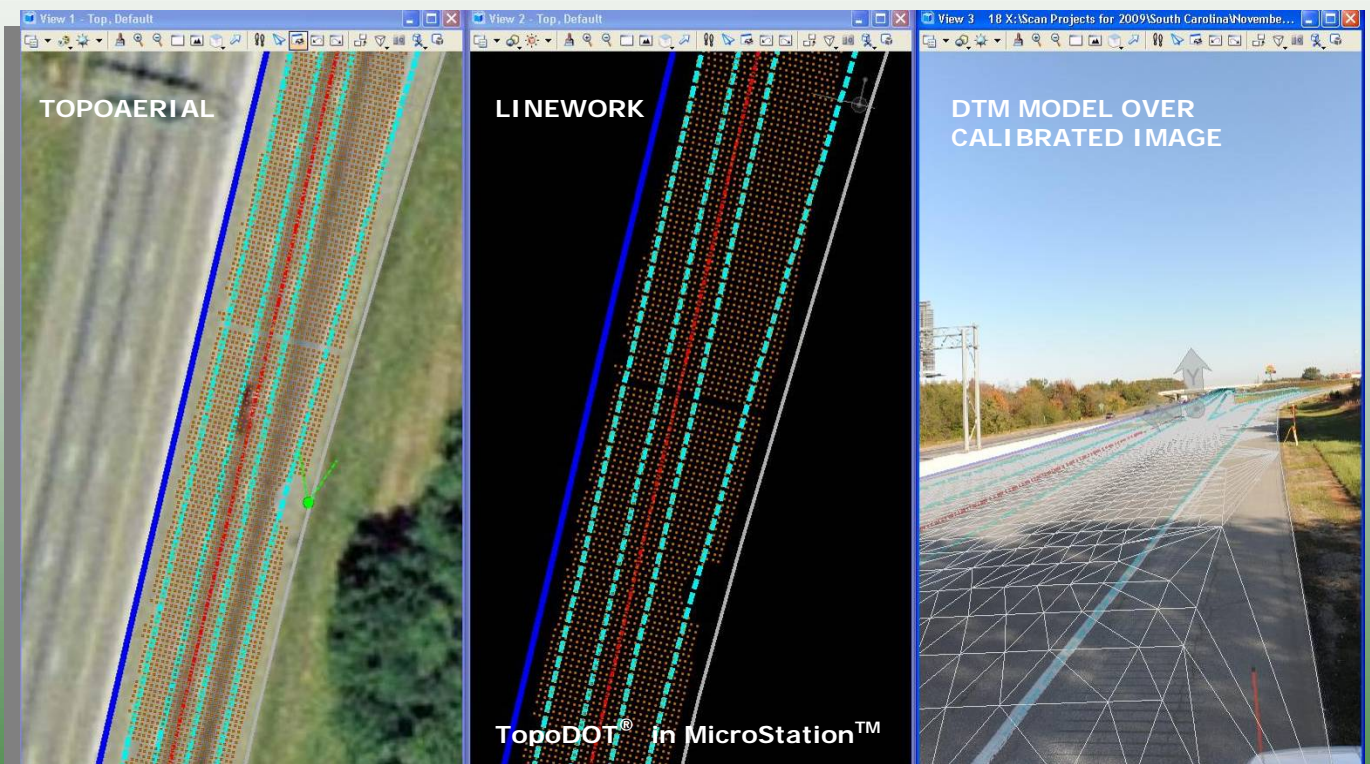
PROJECT HIGHLIGHTS

Customer: South Carolina DOT
Project: Interstate #85, South Carolina
Dates: November 2009
Size: 9 Miles
Type: Survey – Full DTM/TOPO
Project Manager: Jennifer Triana
Project Engineer: Michael Cook
Project Team Partner: Holland Surveyors, Inc.

- Very high resolution topography/DTM exceeding project survey requirements
- Field time reduced by 80% over conventional
- Project time reduced by approximately 20%
- Lower cost / higher quality deliverable over conventional survey

Project Summary:

Certainty 3D, LLC (C3D) and Holland Surveyors, Inc. applied 3D imaging technology to produce a full DTM/Topographic survey for South Carolina Department of Transportation. The scanned section consisted of 9 miles of the north bound in I-85. Two control loops were surveyed and leveled to accuracy within project standards. 3D image data was acquired efficiently using C3D's TopoLIFT™ system with a Riegl VZ400/Nikon D700 imaging system. A highly detailed topography was extracted from the data including road break lines (consisting of paved shoulders, and traffic lanes), Bridge Barriers, Spot Shots (2x5 grid size on road surfaces), the combination of these extracted features gives an extremely detailed DTM. Project collection took 6 days for a team of three. The processing for this project took 2 weeks for a team of 3 processors. Total project time and cost were less than conventional survey and yielded a superior product.



Deliverable Summary

- Data processed using Certainty 3D's TopoDOT® application in MicroStation™
- All 3D image data is traceable back to control network survey reference
- TopoDOT® generated model delivered in MicroStation™ formats
- Completed Topography including all breaklines, elevations, above ground utilities using South Carolina DOT required formats and cell libraries