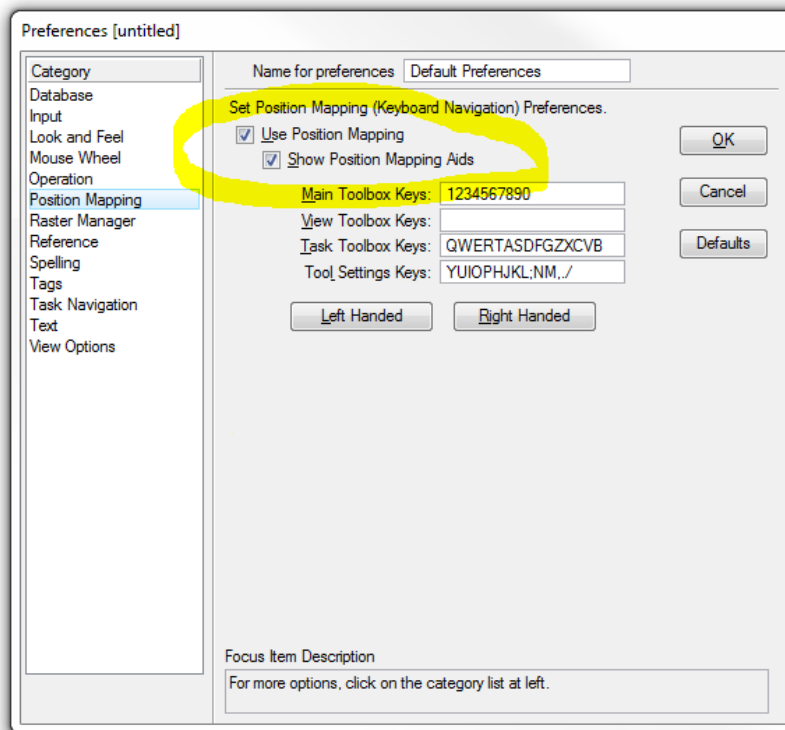


June 7, 2017

For: General Release
From: Jennifer Triana
Certainty 3D, LLC

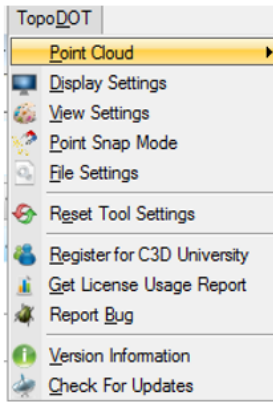
TopoDOT Version 10.5 Tools Location Changes

With release 10.5 of TopoDOT some tool locations changed to improve the process workflow. Use the images below to find the new location for the tools and menus after you update to version 10.5. The tool paths refer to the tool's mapped position. These paths might be different for different Bentley packages; however you can use the illustrations below to locate the tools accordingly. If you can't see the tool paths on your computer, you can turn it on under Preferences > Position Mapping > (check) Use Position Mapping Aids.

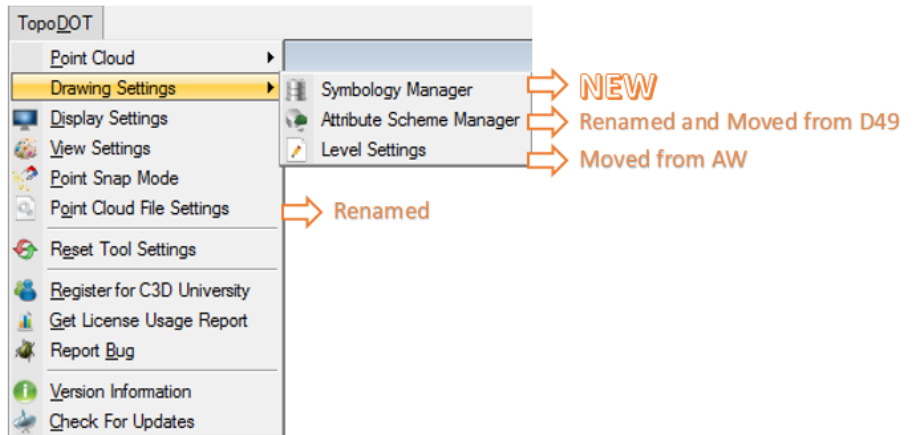


TopoDOT Drop Down Menu

TopoDOT Version 10.0

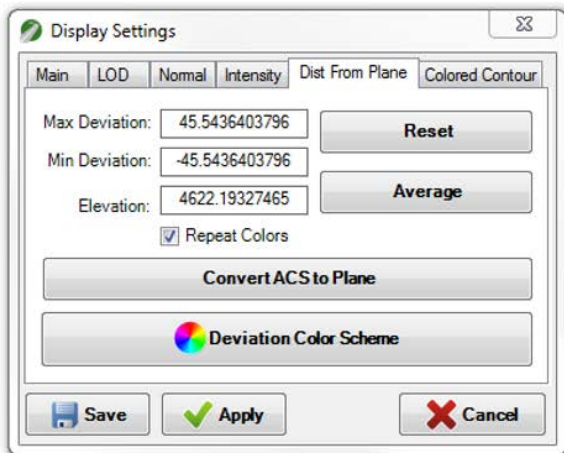


TopoDOT Version 10.5

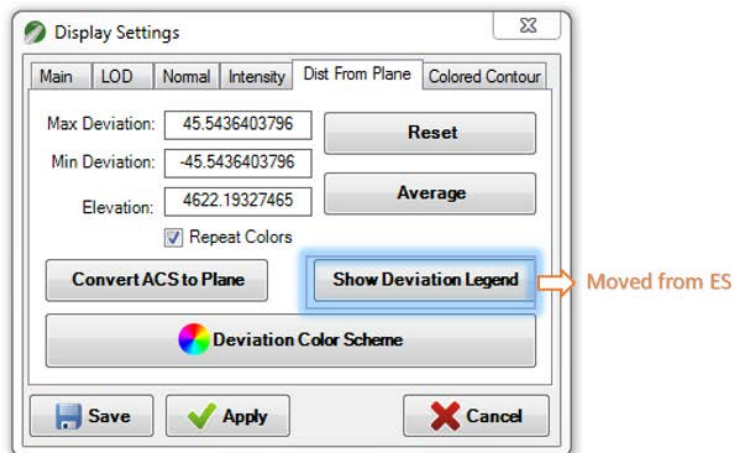


TopoDOT Display Settings Distance from Plane Tab

TopoDOT Version 10.0



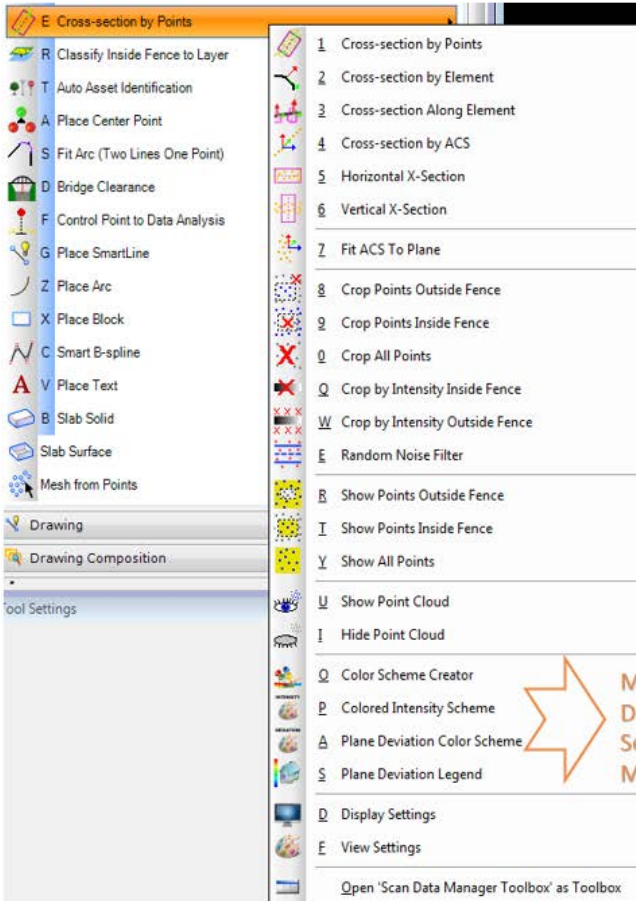
TopoDOT Version 10.5



TopoDOT Scan Data Manager Toolbox

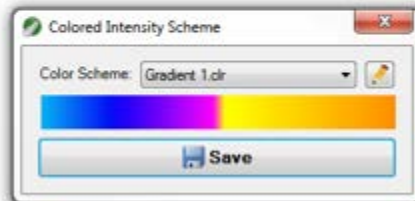
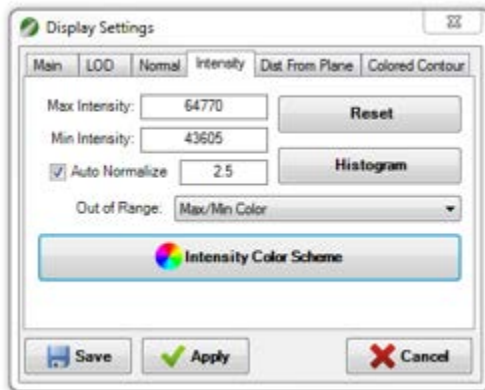
TopoDOT Version 10.0

TopoDOT Version 10.5



➔ Moved from S8
➔ NEW

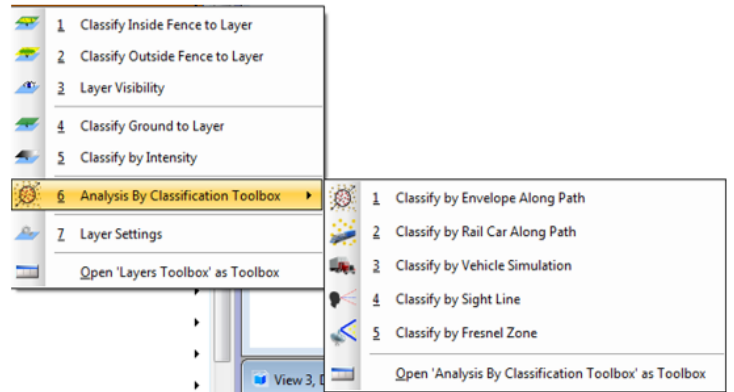
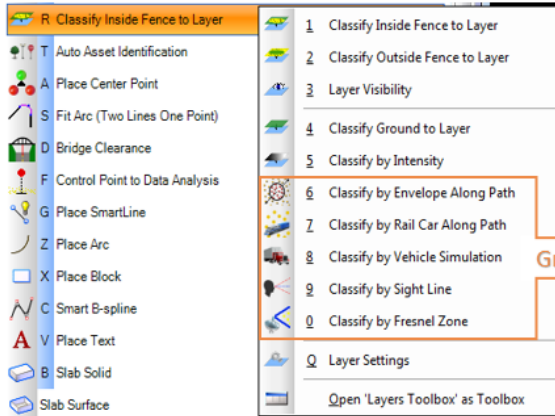
➔ Moved to
Display
Settings
Menu *



TopoDOT Layers Toolbox

TopoDOT Version 10.0

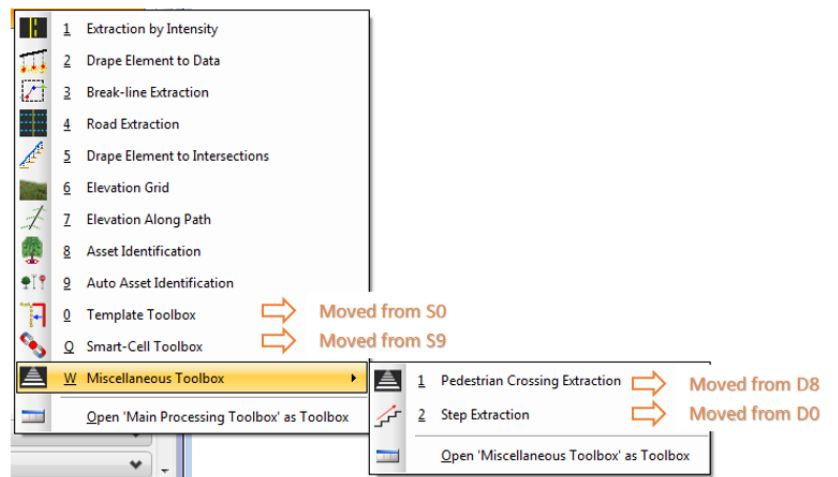
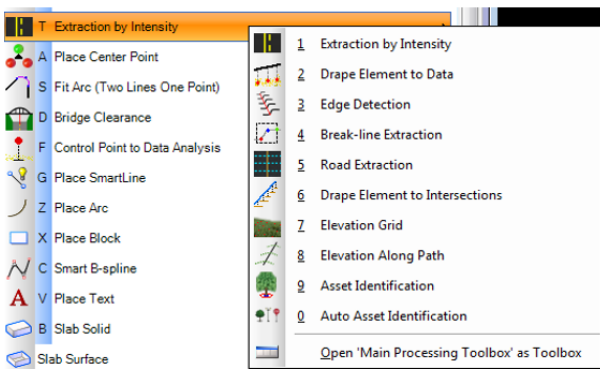
TopoDOT Version 10.5



TopoDOT Main Processing Toolbox

TopoDOT Version 10.0

TopoDOT Version 10.5



TopoDOT Point Toolbox

TopoDOT Version 10.0

TopoDOT Version 10.5

1 Place Center Point
 2 Delete All Points
 3 Delete All Points Near Selected Lines → Moved to D61
 4 Place Red Point
 5 Place Teal Point
 6 Place Blue Point
 7 Place Yellow Point
 8 Place Orange Point
 9 Place Green Point
 0 Place Survey Point
 Config
 Q Point Options
 W Level Options → Moved to Drawing Settings **
 E Load SMD/XIN File
 R Plot Elevation Labels → Moved to D63
 Open 'Point Toolbox' as Toolbox

1 Place Center Point
 2 Delete All Points
 3 Place Red Point
 4 Place Teal Point
 5 Place Blue Point
 6 Place Yellow Point
 7 Place Orange Point
 8 Place Green Point
 9 Place Survey Point
 0 Point Options
 Open 'Point Toolbox' as Toolbox

TopoDOT Break-Line Modification Toolbox

TopoDOT Version 10.0

TopoDOT Version 10.5

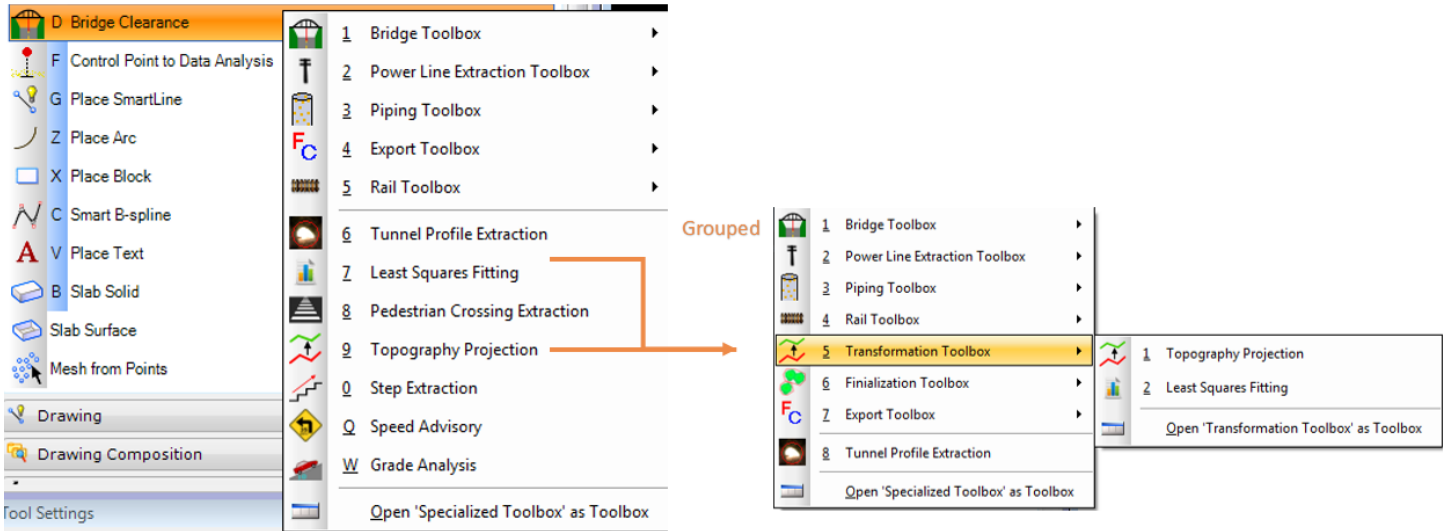
1 Fit Arc (Two Lines One Point)
 2 Fit Arc (One Line Two Points)
 3 Join Break-lines By Level
 4 Fix Selected Line Anomalies
 5 Fix Selected Line Elevation Anomalies
 6 Create Continuous Element
 7 Element Key Points
 8 Fence Along Element → Moved to E8
 9 Smart-Cell Toolbox → Moved to Main Processing Toolbox at DO & D0 respectively
 0 Template Toolbox → Moved to Main Processing Toolbox at DO & D0 respectively
 Open 'Break-line Modification Toolbox' as Toolbox

1 Fit Arc (Two Lines One Point)
 2 Fit Arc (One Line Two Points)
 3 Join Break-lines By Level
 4 Fix Selected Line Anomalies
 5 Fix Selected Line Elevation Anomalies
 6 Create Continuous Element
 7 Element Key Points
 Open 'Break-line Modification Toolbox' as Toolbox

TopoDOT Specialized Toolbox

TopoDOT Version 10.0

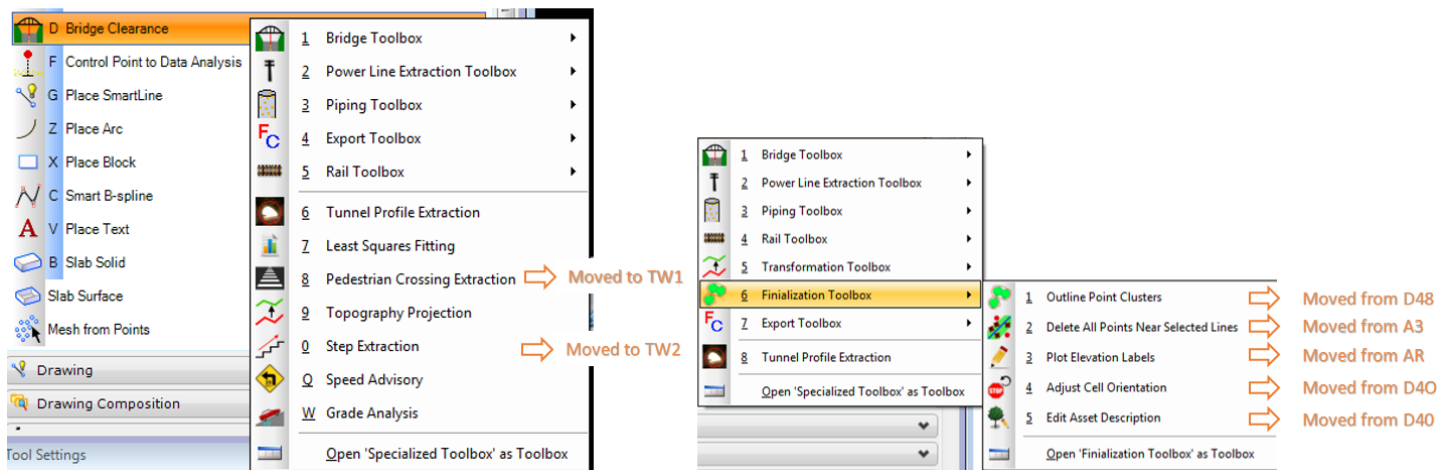
TopoDOT Version 10.5



TopoDOT Specialized Toolbox New Finalization Toolbox

TopoDOT Version 10.0

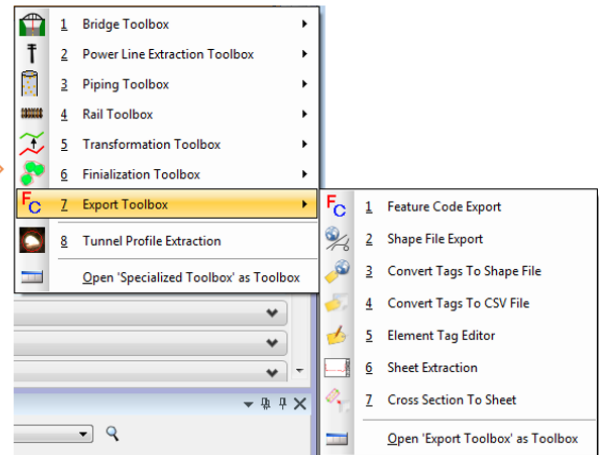
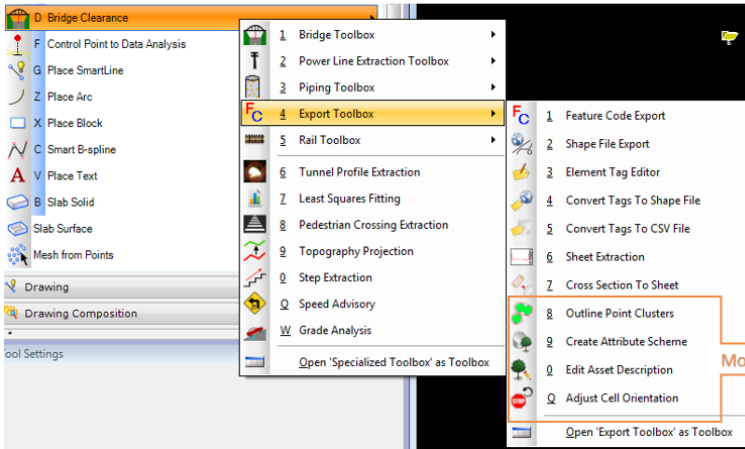
TopoDOT Version 10.5



TopoDOT Specialized Toolbox Export Toolbox

TopoDOT Version 10.0

TopoDOT Version 10.5



TopoDOT Data Assessment Toolbox

TopoDOT Version 10.0

TopoDOT Version 10.5

